



Community-Based (CB) Micro & Small Enterprise (MSE) Climate Support Programme:

*Partnering in Response to Hurricane Beryl
for Relief, Recovery & Rebuilding MSEs*

September 30, 2024



About Hurricane Beryl

- The **strongest and fastest Tropical Storm** to swiftly matriculate into a **Category 5 hurricane** during the period **June 28 to July 9, 2024**
- **Earliest Category 4 Hurricane recorded...** *broke Hurricane Dennis record (2005)*
- Beryl made landfall as a Category 4 Hurricane raging across the southern Caribbean islands, flattening hundreds of building and costing lives & livestock, leaving about **\$510 million worth of damage in the Caribbean**, especially...
 - ✓ **Union Island, Saint Vincent and the Grenadines** – About **90%** of houses demolished; **1,700** people displaced; Airport terminal severely destroyed
 - ✓ **Carriacou, Grenada** - **3,500** households affected; about **10,000** homes badly damaged
- Caused between **\$28 to 32 billion in damage in the U.S.** and also impacted **Canada** as far north as Nova Scotia.
- Many countries are still battling the lingering social & economic repercussions.





Beryl's Impact on Jamaica

#StarNews
LIVING IN FILTH - NWC ADDRESSES SPANISH TOWN ROAD COMMUNITY'S SEWAGE ISSUES



 thejamaicastar



SEVERE FLOODING FORCES SPANISH TOWN HOSPITAL INTO EMERGENCY MODE



Made landfall
July 3, 2024
5pm



#LatestNews

COMMUNITY MEMBERS ASSIST IN CLEANUP ACTIVITIES AT TOLL GATE PRIMARY SCHOOL





Beryl's Impact on Jamaica



- ✓ Over **250 roads** affected by fallen trees & flooding
- ✓ Impacted communities faced **limited access to clean water, proper sanitation and electricity**
- ✓ To date, over **160,000 people**, including **37,000 children**, require **humanitarian assistance** after reporting extensive damages to their homes, water and electricity supplies.
- ✓ Livelihoods in south eastern Jamaica, especially in **Clarendon** and **St. Elizabeth** have been badly disrupted.
- ✓ Estimated damage to agricultural sector is **Ja\$4.7 billion** (approx. **US\$30million**)
- ✓ After more than 2 months, **15 people were still in Rocky Point Shelter**, Clarendon in Sept 2024

LASCO Chin Foundation Response



Opportunity to Pilot a...

Community-Based (CB) Micro & Small Enterprise (MSE) Climate Support Programme *for Relief, Recovery & Rebuilding MSEs*

*focusing **Clarendon & St Elizabeth***

- **PHASE 1: Rapid Relief & Assessment**
- **PHASE 2: Restore & Rebuild CB MSEs**
- **PHASE 3: Support Sustainable Growth**



PHASE 1

Rapid Relief & Assessment

(1 to 3 weeks)

Key Activities

1. Engage Partners willing/able to provide Immediate Relief (2-7 days)
2. Provide Emergency Care Package Relief (2-7 days)
3. Rapid Assessment (5-7 days)
4. Loss & Damage Evaluation (1-2 wks)



LCF Partnerships

Within 3 weeks, the LCF engaged existing partners and forged new partnerships with:

- 1. JWN Foundation**
 - 2. Sandals Foundation**
 - 3. New Testament Church of God (NTCG)**
 - 4. Operation Save Jamaica (OSJ)**
 - 5. Saxthroe Methodist Church**
 - 6. Soroptomist International, Jamaica**
 - 7. Institute of Law & Economics (ILE)**
 - 8. Caribbean Philanthropic Alliance (CariPhilAlliance)**
 - 9. Lasco Affiliated Companies**
- ❖ *Among others who supported our efforts via online contributions***





Emergency Care Package Relief

ONE WEEK after Hurricane Beryl hit Jamaica, the LASCO Chin Foundation in collaboration with partners, mainly JWN Foundation & Sandals Foundation, distributed **1,019 Relief Care Packages** benefiting more than **4,000 people in 4 parishes** who were negatively impacted by the hurricane

July to mid-September 1,930 Relief Care Packages valued at **Ja\$7,238,553.00 (US\$45,700)** were delivered in collaboration with our partners





Emergency Care Package Relief St. Elizabeth and Clarendon

Of the **1,090 Relief Care Packages** distributed in the first week, **930** Relief Care Packages went to families in **19 communities** in **St. Elizabeth and Clarendon**

July to September - 1,127 Relief Care Packages were delivered in **St. Elizabeth and Clarendon**
collaboration with partners





Rapid Assessment

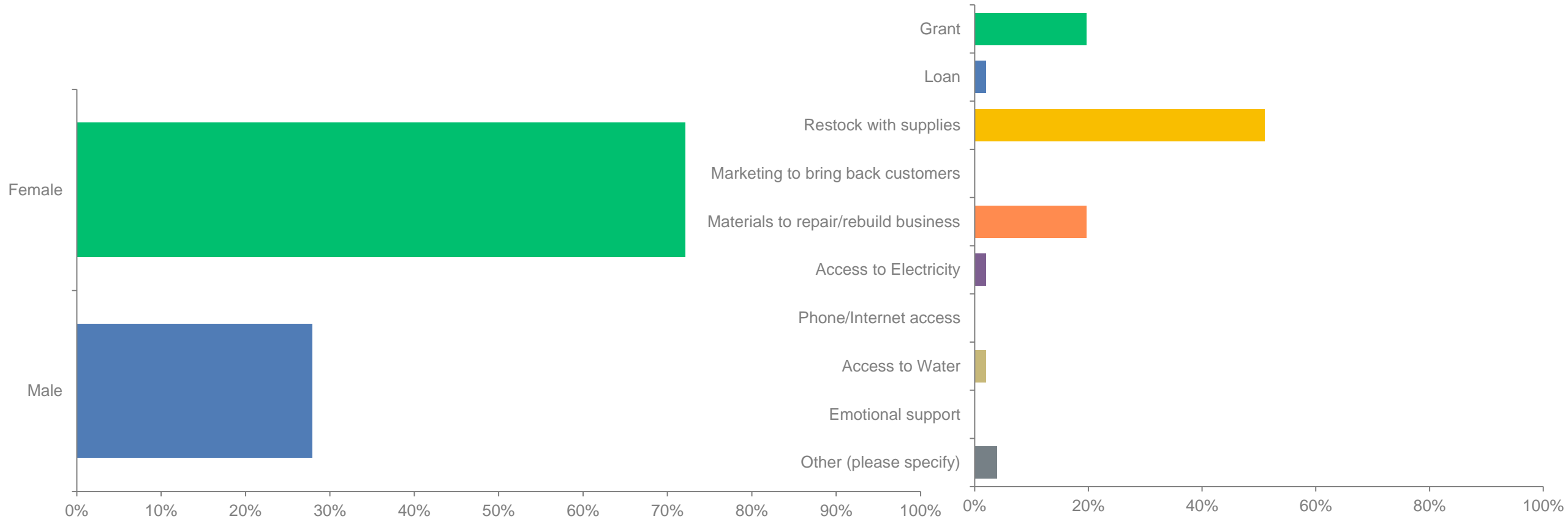


- **68** CB MSEs observed as badly damaged by NTCG (July 12)
- LCF/ILE created a questionnaire (July 13)
- **61** MSEs interviewed by NTCG (July 14 - 24) (extended to July 30)
 - ✓ Data captured in survey monkey (July 17 - 30)
- **48** MSEs determined to be most in need of assistance



Some Loss & Damage Data

What type of recovery assistance do you need now?





Loss & Damage Evaluation

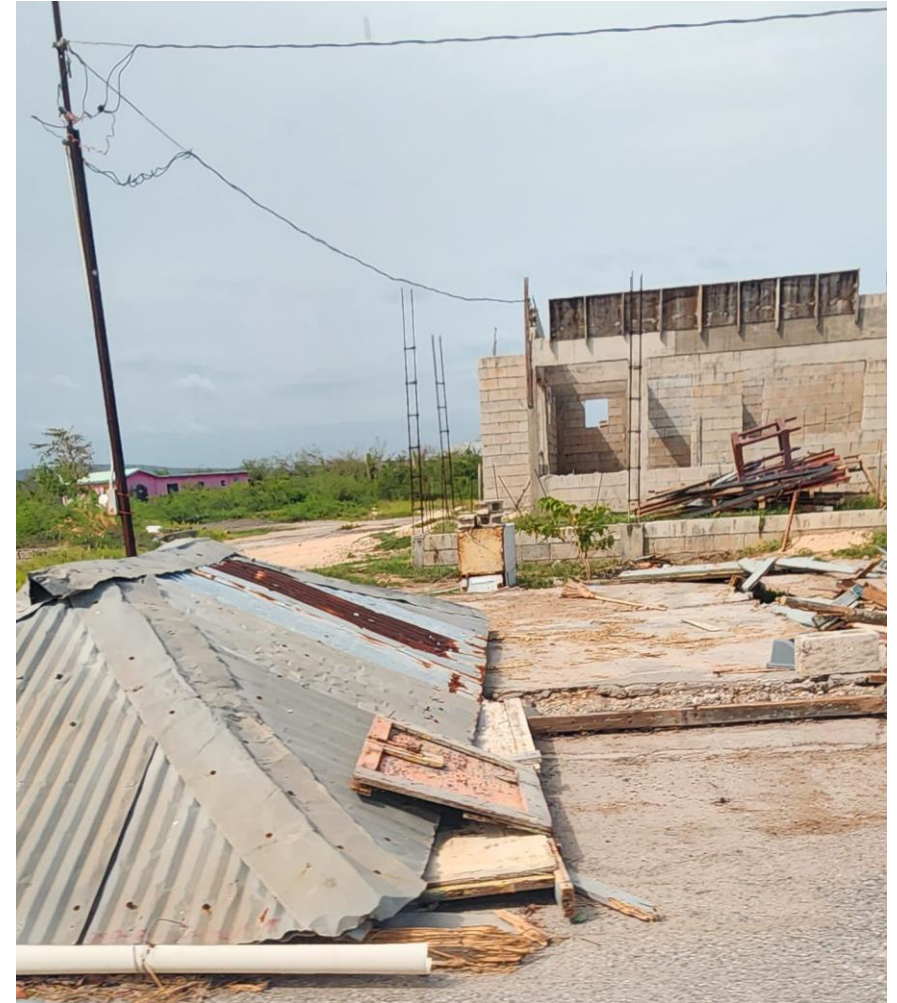
RAPID ASSESSMENT highlighted immediate needs:

1. Restock supplies to aid the restart & rebuilding of CB MSEs:

- **Cook shops**
- **Corner/grocery shops**
- **Women-owned businesses**

2. Repairs to Damaged CB MSEs

3. Financial Assistance





PHASE 2

**Restore &
Rebuild MSEs**
(6 to 12 months)

Key Activities

- 1. Engage Additional Partnerships willing/able to provide**
- 2. Restoration & Rebuilding Support:**
 - ✓ **Restock Supplies**
 - ✓ **Building Repair Materials**
 - ✓ **Financial Assistance**
- 2. Training / Capacity Building Support**
- 3. Monthly Monitoring & Evaluation**



Additional Partnerships



blink•sky

Additional Partners in Jamaica and the Jamaican Diaspora joined the effort to restore and rebuild MSEs:

1. **Blinksky Foundation**
2. **Caribbean American Association of Lake County Florida**
3. **Women of Kulture, Inc.**
4. **Caribbean American Diaspora Alliance**
5. **WMW Jamaica**
6. **Rosemarie Francis-Binder (Diaspora in Germany)**





Restoration & Rebuilding Support

Restock Supplies & Repair Materials

- **30 corner/grocery shops** received LASCO products for resale
- **8 cook shops** received LASCO products for cooking of meals
- **10 women-owned MSEs** received LASCO food products, personal items & other products from *BlinkSky Foundation*
- **9 MSEs** received tarpaulins as a temporary fixture for persons with damaged roof
- **10 MSEs** received **103 sheets alloy 16ft zinc** and/or **40 sheets of 5/8 form plywood** to repair their shops
- **95 care packages*** were also provided to MSE owners for resale and personal consumption for themselves and their families.

**A discreet list of support helpline numbers were added to some of the packages by WMW Jamaica for anyone experiencing violence, abuse, exploitation or other harmful situations*

TOTAL VALUE

Ja\$2,158,324.00 (US\$13,700)





MSE Follow-up Visit



On **September 9, 2024**, LCF in collaboration with representatives from WMW Jamaica, ILE and Mary Oyella, Emergency Response Specialist GBViE, UNFPA conducted a follow-up visit with a few MSEs owners in Clarendon.

During the visit:

- Three (3) women business owners were interviewed to assess their current business status and challenges faced by female-headed MSEs & other in the community.
- The team met with some of the 15 residents at the **Rocky Point Shelter** and discussed their experience in the Shelter as well as their concerns



Training / Capacity Building Support

❖ **September 18, 2024** - ILE started delivery of an interactive, gender-sensitive training programme tailored to the needs and objectives of at least **15 young entrepreneurs**, focusing on equipping them with essential entrepreneurial skills, knowledge, and tools to restore their business and drive sustainable business growth and success.

❖ *Topics includes:*

Session 1 - “Level Up” focusing of Entrepreneurship, Recovery Challenges, Innovation & Digital Literacy

Session 2 - “Mine yuh Business” focusing Goal Setting, Exploring Business Models Canvas, Sustainability and the Marketing Mix

Session 3 - “All about di Money” focusing on Financial Literacy, Budget Preparation and Record Keeping

Session 4 - “Network=NetWorth” focusing on Business Registration, Legal Compliance and Networking





Restoration & Rebuilding Support

Financial Support

- ❖ ILE will provide financial support for at least **10 MSEs** led by **youth entrepreneurs** as part of the Training/Capacity Building Support
- ❖ LCF proposes to collaborate with financial institutions and/or other organizations to **provide access to grants and/or interest-free loans** designed to support the rapid rebuilding and sustainable growth of affected businesses.
- ❖ LCF is currently seeking assistance for the establishment of an “**Entrepreneurship Fund**” to support MSEs and other micro & small enterprises





Monthly Monitoring & Evaluation

- **LCF** designed a questionnaire* to monitor and evaluate the progress of MSEs that benefited from the **CB MSE Rapid Recovery Assistance Programme** on a monthly basis
 - **WMW Jamaica & Mary Oyella guided the inclusion of GBV-related questions*
- **OSJ and other partners will organize monthly interviews with 64 MSEs to collect data and monitor their development**
- Data collected will inform **continuous improvements and adjustments.**
- Monthly **progress reports, impact assessments, and feedback to key stakeholders** will be prepared



July 11, 2024



August 28, 2024

PHASE 3

**Support
Sustainable
Growth
(TBD)**



Key Activities

1. **Ongoing Monitoring/Evaluation**
2. **Provide Targeted Support according to needs of each business**
3. **Formalize relationship with LASCO Distributors Ltd. *(where applicable)***



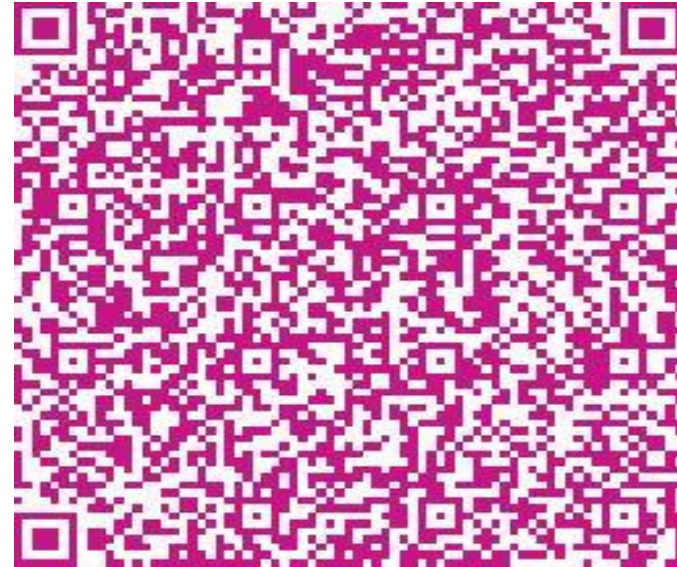
Targeted Support for Sustainable Growth



For more information

Email: info@lascochinfoundation.org

WhatsApp: (876)276-8950



To support us, visit our website

<https://lascofoundation.org/en/i-will-donate/hurricane-relief-care-package/>

